



Ohio River Sub-Area Planning Louisville Segment

(how to get started)

Rick Jardine
EPA R4OSC



“If your presence doesn’t make
an impact,
your absence won’t make a
difference”



40 CFR 300.210 (c)

- Area Contingency Plans
 - (1) - guides team member identification
 - (2) - provides for overlap with Title III local planning districts
 - (3) - specifies topics that shall be covered
 - (4) - specifies the inclusion of a Fish and Wildlife and Sensitive Environments Annex



Team Identification 40CFR 300.210 (c)(1)

- RRTs, USCG DRGs, NSFCC, SSCs, SERCs, LEPCs (e.g. Louisville)
- EPA R4&5
- USCG D8, Sector Louisville
- Kentucky, Indiana
- DOI, USACE, USFS, DOE, NOAA, USNavy
- Tribal Members
- ORSANCO, Industry (e.g. Marathon)



Topic Criteria 40CFR 300.210 (c)(3)

- (i) Description of the area
- (ii) Description of responsibilities to respond
- (iii) List of equipment and personnel available to respond
- (iv) Procedure for obtaining an expedited decision for dispersant use
- (v) Description of how the plan integrates with other pertinent plans



Going Digital

- Field Mobility
 - Collect and access data in the field
 - Form-based:
Survey123 for ArcGIS
 - Map-based:
Collector for ArcGIS

A screenshot of the Survey123 for ArcGIS mobile application interface. The screen displays a form titled "R4 Irma Facility Rapid Needs Assessment Survey". The form includes fields for "Assessment Date" (9/14/17) and "Assessor Name" (Bryan Vasser). Below these are radio button options for "Assessment Agency or Affiliation" (EPA, START, DEP, Other), "Assessment Team Division" (Division A, Division B, Division C, Other), and "Assessment Team" (Team 1, Team 2, Team 3, Team 4, Other). The "Assessment Type" section has radio buttons for "Field verification" and "Phone verification". At the bottom, there are expandable sections for "Facility Information", "Facility Assessment Information", "Facility POC Information", and "Photo Documentation". A green checkmark icon is visible in the bottom right corner of the form.



Going Digital Cont.

- Sharing and Collaboration
 - EPA GeoPlatform allows for sharing of content w/ project stakeholders
 - Constituent engagement

A screenshot of the EPA GeoPlatform website. The top navigation bar includes links for "Home", "Gallery", "Map", "Scene", and "Groups", along with a "Sign In" button and a search box. The main content area features a large banner with the text "ONE EPA Workplace GeoPlatform" and a background image of people in a meeting. Below the banner is a navigation menu with links for "EPA Home", "Privacy and Security Notice", "Comments and Suggestions", and "Contact Us". A text box below the menu describes the platform as a shared technology and governance framework. At the bottom, there is a footer with links for "Esri.com", "Help", "Terms of Use", "Privacy", "Contact Esri", "Report Abuse", and "Contact Us".

Home Gallery Map Scene Groups Sign In

ONE EPA Workplace GeoPlatform

EPA Home | Privacy and Security Notice | Comments and Suggestions | Contact Us

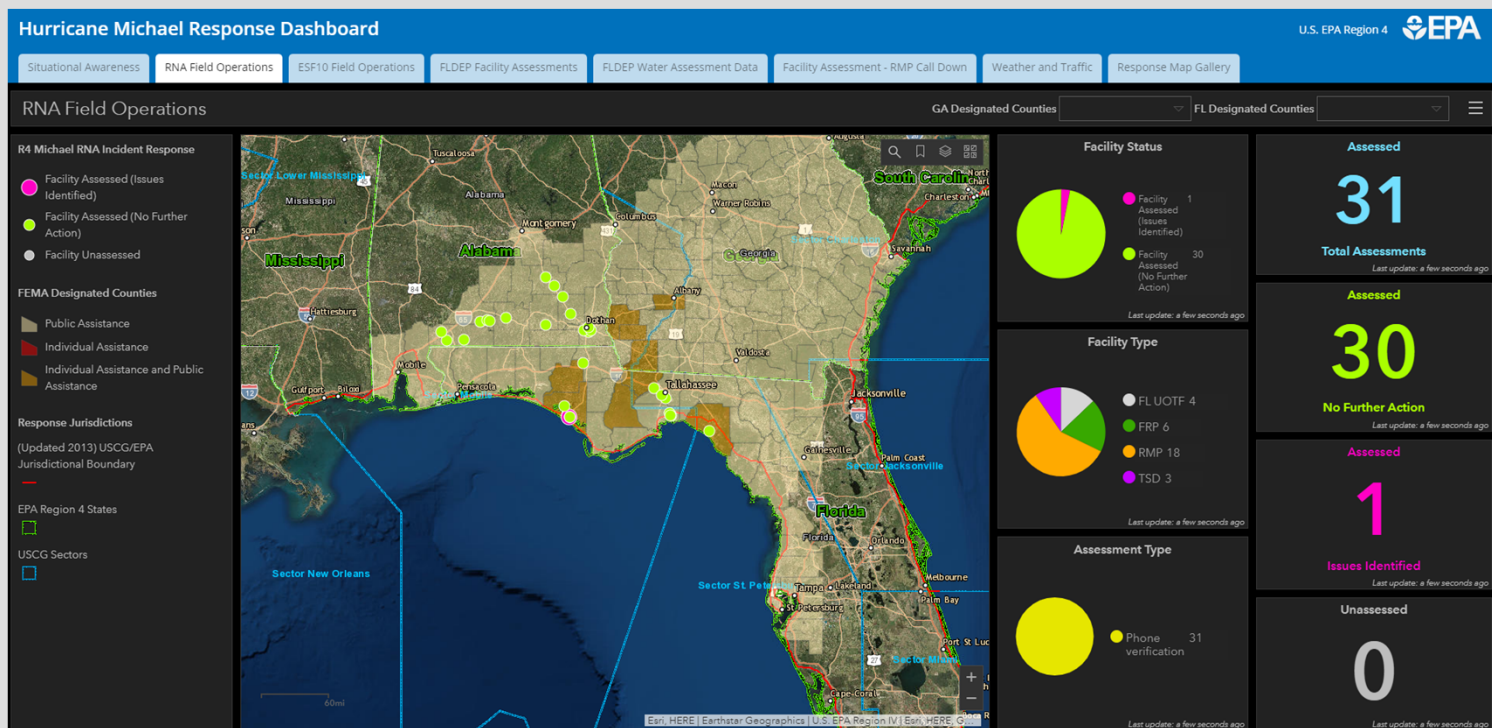
The EPA GeoPlatform is a shared, One EPA technology and governance framework, which encompasses a community of expertise as well as a suite of geospatial tools, data and services that will help coordinate and consolidate mapping activities, applications development and data management across the Agency.

Esri.com | Help | Terms of Use | Privacy | Contact Esri | Report Abuse | Contact Us



Going Digital Cont.

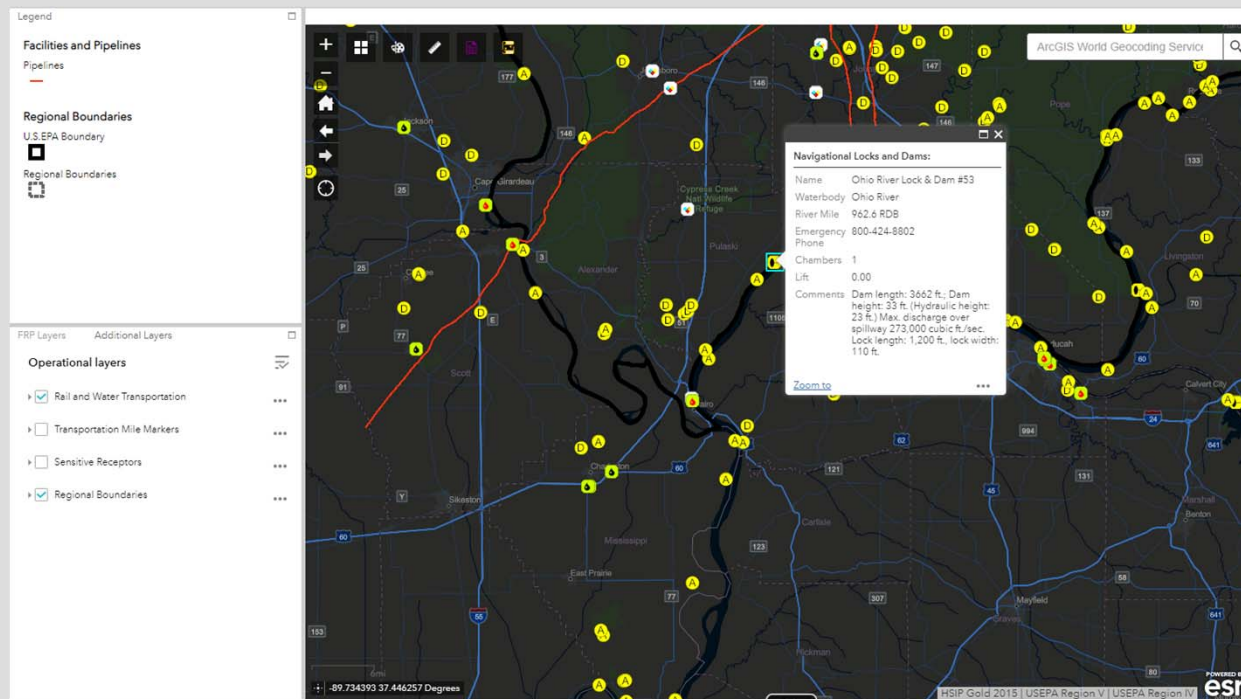
- Mapping and Visualization
 - Dashboards provide situational awareness and enable information-driven decision making





Looking Forward

- Implementation of digital workflows from the field to the map





Planning with Specifics

The screenshot displays the "R4 MS Sub-area Viewer" web application for Clark and Wayne Counties. The interface includes a legend on the left, a map area with various layers, and a data popup window.

Legend:

- Pipelines:** CO2, CRD, EPG, LPG, NG, PRD
- T&E Species (Point):** (represented by a pink dot)
- Oil and Gas Sensitive Receptors:**
 - T&E Species (Area)
 - T&E Species (Point)
 - T&E Species (Line)
 - Public Water Supply Wells
 - Public Lakes
 - Parks
 - Trail Heads
 - Wildlife Management Areas

Data Popup (1 of 4):

SNAME	Acer leucoderme
SCOMNAME	Chalk Maple
GNAME	Acer leucoderme
GCOMNAME	Chalk Maple
NAME_CATEG	4
NAME_CAT_1	Vascular Plant
NAME_TYPE_P	P
G_RANK	G5
S_RANK	S1
EO_TRACK_S	Track all extant and selected historical EOs
D_CONC_FEA	1
CONC_FEATU	Point
D_LOC_UNCE	1
LOC_UNCERT	Negligible

The map shows a grid of sub-areas with various colored lines representing pipelines and pink dots representing T&E Species (Point) data. A search bar at the top right allows for finding addresses or places. The bottom of the map shows a scale bar (10mi) and coordinates (-89.224 31.691 Degrees).

POWERED BY esri

Esrri, HERE, Garmin, FAO, METI/NASA, USGS, EPA, NPS | U.S. EPA Region IV